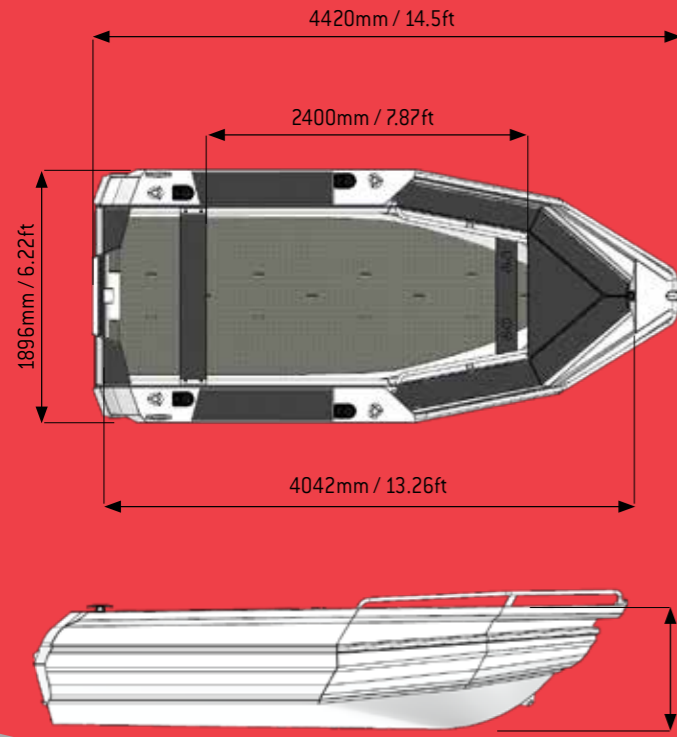
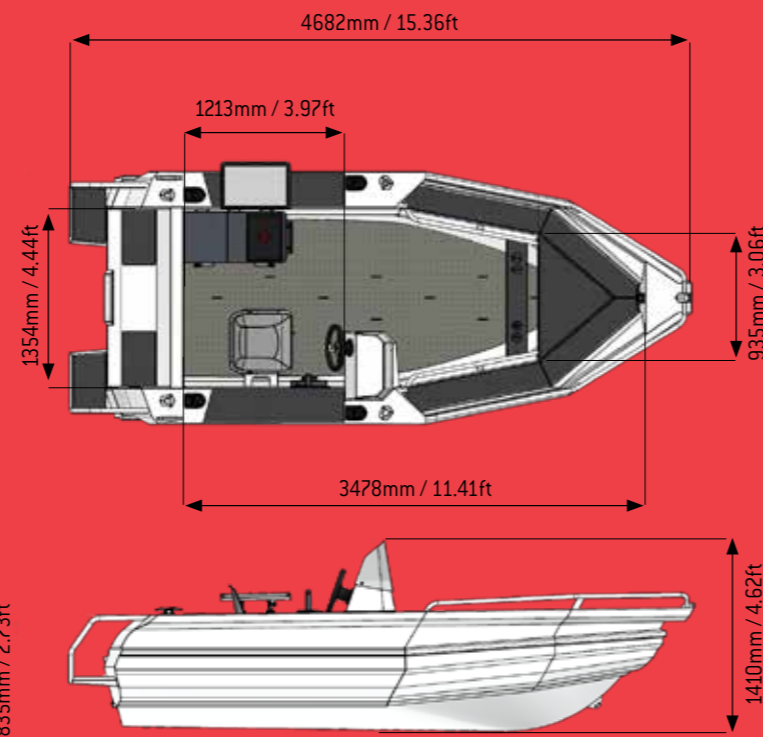


1450 SERIES

EXPLORER



FRONTIER

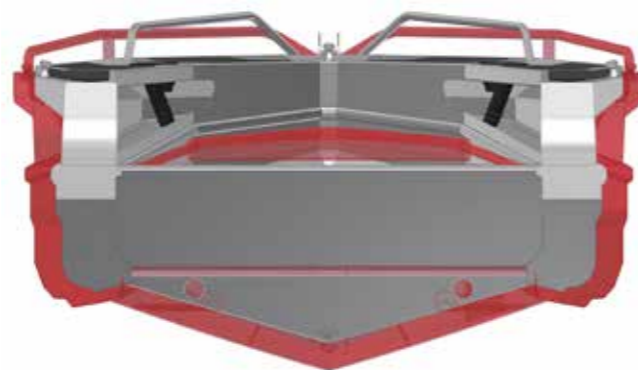


SPECIFICATIONS

Length Feet	14.5ft(4.42m)
Max Adults	4
Recommended HP	EX 25hp / FT 30hp
Maximum HP	EX 40hp / FT 50hp
Leg Length	20"
Fuel Tank	Tote Tank
External Beam	1.89m (75.7")
Internal Beam	1.35m (53.3")
Deadrise	15°
Tube Thickness	3mm (0.118")
Hull Thickness	3mm (0.118")
Dry Hull Weight	EX 265kg / FT 290kg
Dry Hull Weight (USA)	EX 628lbs / FT 683lbs
Tow Weight approx Explorer	655kg / 1444lbs
Tow Weight approx Frontier	720kg / 1587lbs
Length on trailer	5.9m (19'4")
Reserve Buoyancy	960L / 253.6gal
Australian Builders Plate AS1799 (AUS only)	
US Coastguard ABYC (USA only)	

FLOOR COMPARISON

1450 vs 1410



1450 SERIES

Stabicraft's new 1450 series pays homage to one of the most successful and versatile boats in Stabicraft's history – the 1410.

The 1450, however, is more exceptional than its predecessor in every way from thicker pontoons and floor, additional rod holders, cleats and Stabicraft's Multiholders. With a larger internal volume and forward seating as standard you can do everything you're used to doing in a 1410 plus much, much more.



1450

EXPLORER **FRONTIER SPORTFISH** **FRONTIER PROFISH**

	EXPLORER	FRONTIER SPORTFISH	FRONTIER PROFISH
CABIN & CONSOLE	Side Helm Console Windscreen Starboard	Optional	•
	Side Helm Console Windscreen Port		Optional
	Side Helm Console Powder Coated (Spica Pearl) Stb	•	•
	Side Helm Console Powder Coated (Spica Pearl) Port		Optional
	Skipper Seat & Swivel on Cantilever Starboard	•	•
	Skipper Seat & Swivel on Cantilever Port		Optional
	Fish Pro Seat Upgrade Starboard		Optional
	Fish Pro Seat Upgrade Port		Optional
Cable Steer with Gussi Soft Touch Wheel	•	•	
DECK	Broadhead Wing-Style Coamings	•	•
	Bow Seating Area	•	•
	Maximised Width 4mm Tread-plate Floor	•	•
	Traveling rod-holder Sockets x4 in Bow	•	•
	Raised Anchor Bulkhead	•	•
	Raised Casting Platform over Anchor Well	•	•
	Stabi Cleats x3	•	•
	4x Rod holders in Aft Coamings	•	•
	4x Multiholders in Aft Coamings	•	•
	Bolt in Seating Plank	•	•
	Removable Bait board (Railblazer)	Optional	Optional
70L Split Lid Icey-tek with Padded lid		•	
Upgrade to Stainless Steel rod holders		•	
TRANSOM	Transducer Brackets, Starboard	•	•
	Transducer Bracket Port		•
	Boarding Step Starboard	Optional	•
	Boarding Step Port	Optional	Optional
	Raised Transom		•
Bolt on Live Bait Tank		Optional	
OTHER	3mm Arrow pontoons	•	•
	Split Bow Rails	•	•
	Foam Filling - AU/USA/NC/SCANDINAVIA	•	•
	Foam Filling - NZ	Optional	Optional
	Minn Kota Bracket	Optional	Optional
	DMW Single Axle Trailer - NZ	Optional	Optional
PAINT & FINISHING	Stage One	Optional	Optional
	Stage One - Metallic Upgrade	Optional	Optional
	Stage Two	Optional	Optional
	Stage Two - Metallic Upgrade	Optional	Optional
	Tail Graphics & Model Name	•	•

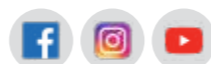
KEY: blank space "Not Available" • "Standard"

WHY THE 1450 IS A BIG STEP UP FROM THE 1410

- An extra 120mm (4.7") in length overall
- An extra 190mm (7.5") of beam overall
- 3mm (1/8") 'Arrow' pontoons (1410 was 2.5mm (1/8") and non-Arrow pontoons)
- Wider, 4mm (5/32") thick, treadplate floor (1410 was 3mm (1/8") with narrow floor)
- 3mm (1/8") broadhead Wing Style Coamings with forward seating a standard feature
- 4 x Stabicraft Multiholders now a standard feature
- 8 x alloy rod holders now a standard feature
- 3 x weld on cleats now a standard feature

www.stabicraft.com

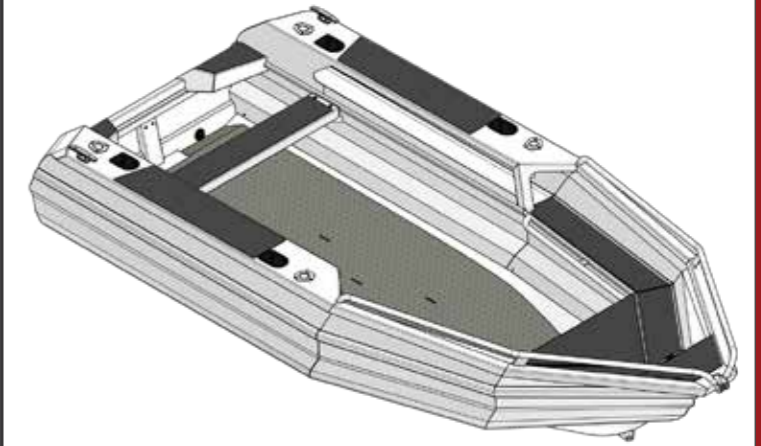
345 Bluff Highway, Invercargill, New Zealand. Phone: 0064 3 211 1828 Email: enquiries@stabicraft.com



AVAILABLE PACKAGES

EXPLORER

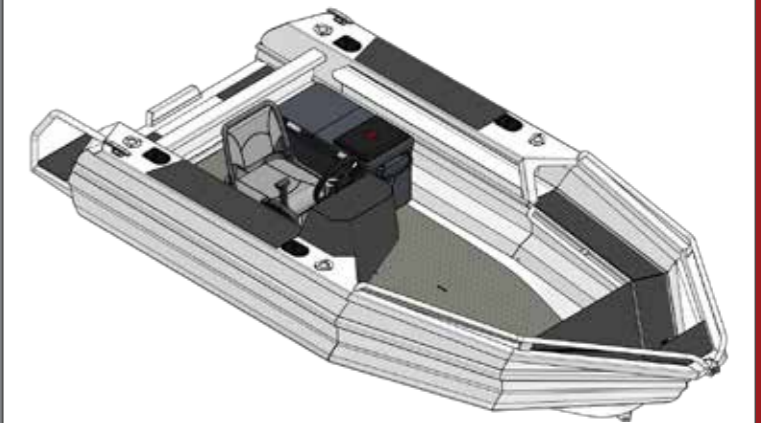
The 1450 Explorer is a longer, wider and more solid version of its predecessor. It still gives you flexibility with a spacious tiller steer setup and added features like the forward seating, alloy rodholders and Stabicraft Multiholders as standard. It is the most well-appointed sub 5 meter open boat in its class.



FRONTIER SPORTFISH

The 1450 Frontier Sportfish comes with a side console and upholstered seat as standard as well as the ever-reliable 70L Icey-Tek chilly bin.

With options like a bolt on live bait tank and removable baitboard the 1450 Frontier Sportfish means you have all the basics for chasing down your favourite fish



FRONTIER PROFISH

The 1450 Frontier Profish is a serious step up from the Sportfish version with additional stainless steel rodholders, belting up paint, dash windscreen and dual boarding platforms all as standard features. Coupled with optional features like port side dash and Fish Pro seats the 1450 Frontier Profish is ready to compete with much larger boats (and much larger fish).

