

# 2050 FRONTIER

## A CENTRE CONSOLE FISHING MASTERPIECE

Experience unparalleled deck space, ingenious storage solutions, and endless configuration options with the new 2050 Frontier from Stabicraft® Marine, empowering you to Adventure with Confidence™.



**STABICRAFT®**

ADVENTURE WITH CONFIDENCE.



# 2050 FRONTIER

## INSANE DECK SPACE

Usable space from bow to stern is the stand-out feature of the 2050 Frontier, making practical use of every bit of its 6.3m overall length. The optional 2.8m<sup>2</sup> scupper-drained bow deck area is enormous, creating a large stable platform to stand and cast from. The additional internal beam provided by the widebody life-ring means side-by-side seating is now a possibility while still retaining plenty of room along the gunnels.



## STORAGE GALORE

Secure Storage is very important in an open boat so every pocket of the 2050 Frontier is utilized so that not only can you be confident in taking all the gear you need but you also have the peace of mind knowing it will be secure. Each gunnel features an optional locking door that secures a compartment long enough to store 8ft + rods. The optional bow casting deck opens up on gas struts to reveal a monstrous 600L plus of internal dry storage volume. Big enough for coolers, portable fridges or camping gear for multi-day excursions. There is an additional top-accessed dry bin in the forward deck useful for storage of ropes and fenders and two shallower bins in the outer deck intended for tackle storage. A further compartment in the bow houses the drum winch if fitted or rope, chain and anchor.



## OPTIONS, OPTIONS AND MORE OPTIONS!

Flexible configuration via an assortment of layout options allows the 2050 Frontier to be arranged to suit a variety of fishing applications. There's a wide console complimented by a range of side-by-side seating options and a narrow console for single seating with more floor space, both with or without suspension. The console can be optioned in a central or rear position and floor socket provisions allow for numerous pedestal seating arrangements. The full range of 2050 transom configurations from the Supercab and Treker are available, as well as a new low profile option which is standard across the Frontier packages.

## SPECIFICATIONS

Hull Length	6.32m [20.7ft]
Beam Width	2.31m [91.1in]
Boat Height Min/Max	1.64m/2.06m [64.4in/81.1in]
Dry Hull Weight	875kg [1929lb]*
Maximum Persons	7
Maximum HP Limit	200hp
Min Recommended HP	150hp
Motor Leg Length	25in
Max Aux Motor HP	10hp
Internal Beam	1.72m [67.8in]
Internal Gunnel Height AFT	813mm [32.0in]
Outside Chine Width	2.05m [80.6in]
Deadrise AFT	16deg
Life Ring Thickness	3mm + 3mm [0.12in + 0.12in]
Hull Thickness	5mm [0.20in]
Fuel Tank Capacity	200L [53gal]
Total Sealed Chamber Volume	1726L [61.0ft <sup>3</sup> ]
Life Ring Chamber Volume	1071L [37.8ft <sup>3</sup> ]

*\*The recorded weight is a guideline. Actual dry weight will vary boat by boat dependent on the package selected and additional options included.*

## STANDARD

Navigation lights  
Access step with 4x rod holders in forward casting deck  
Hydraulic tilt helm  
Wiring Loom Installed with 2x 8-channel switch panels  
Stereo Blanking Plates - Head Unit + Speakers x4  
Electric horn installation  
Game chaser transom (25" leg)  
2-step boarding ladder, starboard side  
Low Profile Transom with 4x aft rod holders, includes dry storage, battery storage & live bait tank.  
5mm Hull  
Towing eye  
Arrow pontoons  
200L EPA compliant underfloor fuel tank  
Rigging routed underfloor (flush floor)  
Rivet on gunnel fendering  
Wing style broadhead gunnels  
EVA foam on coaming tops, bow deck, console front and transom steps  
4x Stainless Steel Rod holders and 4x Multi-holders in coamings  
Frontier graphics package installed





# 2050 FRONTIER PACKAGES

## ADVENTURE

The Adventure package comes with the essentials you need in a simple centre console but leaves the appointment of additional features up to you so that you can include anything else you think you'd need.

This entry level package makes the transition into a 6m+ centre console boat a more realistic option for those looking to move into the safety of a chambered boat.

As an unpainted base package, the Adventure represents excellent value for money but still includes all the necessary features like; folding glass windscreen, 2-rung boarding ladder, bow rail, a fully welded tread plate floor and EVA decking on the gunnel tops and fore deck. It has an upholstered fish pro seat on top of a storage seat box and the transom is appointed with a low-profile transom box containing battery storage and live bait tank as standard.



## SPORTFISH

The Sportfish package employs a selection of features to further enhance the onboard experience including all the standard essentials already included in the Adventure package plus an additional selection of popular comforts. Ambient lighting to illuminate the deck areas, a powerful light bar in the bow rail blade and a suspension unit for the helm seat to iron out the bumps on longer runs while a drum winch takes the hard work out of anchoring duties.

The Sportfish is finished in Stage-1 belting up gloss paint and comes ready for a range of additional upgrade options.

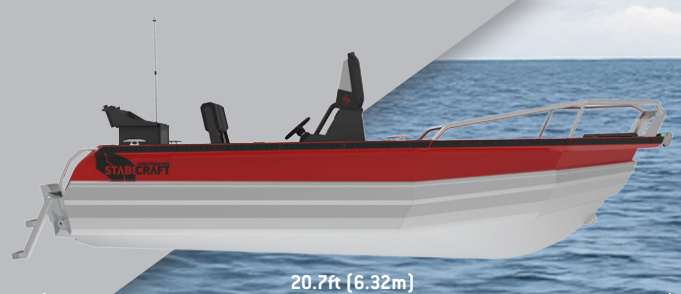
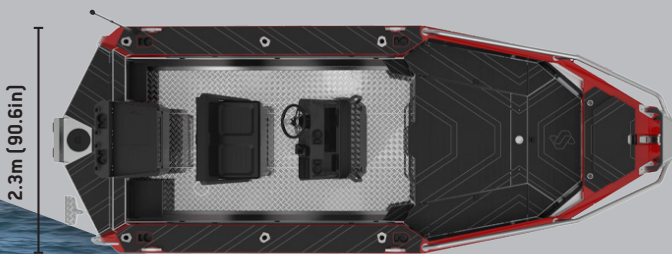


## PROFISH

This premier package suits the more discerning buyer looking for comfort and aesthetic features as standard that enhance their time on the water. The Profish has all the included items of the Adventure and Sportfish packages but adds to that the most popular creature comforts while upgrading the layout to a dual width central console with side by side suspension helm seating.

The pontoon chambers are closed cell baffled for noise reduction, the fully welded floor is appointed with 6mm EVA decking that is soft and insulates your feet and is available in a range of 4 colours.

The coaming pockets are enclosed with lockable powder coated doors and the bow rails are powder coated to match the console and finally the Profish is finished in Stage 2 gloss paint which extends down to the bottom of the life-ring.



# PACKAGES

	ADVENTURE	SPORTFISH	PROFISH
CABIN/ CONSOLE	Rear console package with aft single-width console and pedestal seating	Optional	Optional
	Single-width centre console	•	N/A
	Dual-width centre console	Optional	Optional
	Raised forward casting deck with lockable cargo storage	Optional	Optional
	Ambient blue LED lighting package	Optional	•
	Stereo - Fusion RA210 with 2x 200w speakers installed in gunnels	Optional	Optional
	Stereo - Fusion RA670 with 4x 200w speakers, 2x in gunnels, 2x in forward bulkhead	Optional	Optional
SEATING	No steering system supplied, steering wheel only	Optional	Optional
	Single helm suspension base upgrade with integrated swivel-slider & fish pro seat	Optional	•
	Single helm storage box base with swivel-slider & fish pro seat	•	N/A
	Dual-width helm seating with 105L Ikey Tek cooler and repositionable backrest	Optional	Optional
	Dual-width helm seating with storage box and repositionable backrest	Optional	Optional
	Dual suspension seat bases, with storage drawer and 2x fish pro seats	Optional	Optional
	Shotgun seat in front of forward console	Optional	Optional
TRANSOM	Shotgun seat in front of rear console	Optional	Optional
	Fish pro pedestal casting chair for bow deck	Optional	Optional
	Bolt on bait board for low profile transom	Optional	Optional
	Raised battery rigging box	Optional	Optional
	Bolt on bait board for rigging box transom	Optional	Optional
	Bolt on live bait tank for rigging box transom	Optional	Optional
	Bolt on bait board with drawer for rigging box transom	Optional	Optional
HULL/ FLOORING	Central fish box transom with lower battery storage	Optional	Optional
	3/4 fish box transom with lower battery storage	Optional	Optional
	Port auxiliary/kicker motor bracket (max 10hp)	Optional	Optional
	Transom cages with dual boarding ladders	Optional	Optional
	Ski/tow hoop	Optional	Optional
	Yamaha extended cavitation plate for F150 XSA, XCB, XC	Optional	Optional
	Closed cell baffling in life-ring	Optional	Optional
COAMINGS	Boatcatch mounting provision welded to bow	Optional	Optional
	Keel line wear strip upgrade	Optional	Optional
	Treadplate floor	•	N/A
	EVA decking on flat floor (selectable colour)	N/A	Optional
	Wash down pump kit with hose & gun	Optional	•
	Drum winch with 100m of braid & 10m of 6mm chain & swivel	Optional	Optional
	Electric trolling motor mount, port side bow	Optional	Optional
PAINT	LED light bar installed in bow rail	Optional	•
	EVA foam lining in gunnel pockets	Optional	Optional
	Locking doors on port and starboard gunnel pockets	Optional	Optional
	Powder coated bow rails and boarding ladder handrail - spica pearl finish	Optional	Optional
	Handrails on aft gunnel tops - alloy finish	Optional	N/A
	Handrails on aft gunnel tops - powder coated spica pearl	Optional	Optional
	Downrigger provision port & stbd with plugs/breakers & stiffening plates	Optional	Optional
	Additional rod holders x2 supplied loose	Optional	Optional
	Additional rod holders x2 installed	Optional	Optional
	Additional rod holders x4 supplied loose	Optional	Optional
	Pair of vertical clip-on rod holder brackets	Optional	N/A
	Anchor - Sarca #2 (6kg)	Optional	Optional
	Unpainted	•	N/A
	Stage 1 - belting up gloss with coaming fendering	Optional	•
	Stage 1 - belting up metallic with coaming fendering	Optional	Optional
	Stage 2 - belting up & external pontoon gloss with coaming & extrusion fendering	Optional	Optional
	Stage 2 - belting up & external pontoons metallic with coaming & extrusion fendering	Optional	Optional
	Stage 3 - full, inc transom & int pontoons, gloss, with coaming & extrusion fendering	N/A	Optional
	Stage 3 - full, inc transom & int pontoons, metallic, with coaming & extrusion fendering	N/A	Optional
	Stage 3 upgrade - full inc transom, gloss, with upgrade to epoxy grey internal pontoons	N/A	Optional
	Stage 3 upgrade - full inc transom, metallic, with upgrade to epoxy grey internal pontoons	N/A	Optional
	Demo graphics fitted	Optional	Optional

IMPORTANT NOTE: Specifications, features and images of boats displayed on this brochure may be updated at any time, at Stabicraft's sole discretion. For the most accurate and up-to-date information about a particular boat, please contact an authorised Stabicraft dealer. \*NOTE: Some images above show optional extras.

N/A not available • Standard

[www.stabicraft.com](http://www.stabicraft.com)

345 Bluff Highway, Invercargill. New Zealand. Phone: 0064 3 211 1828 Email: [enquiries@stabicraft.com](mailto:enquiries@stabicraft.com)

